



KINDERWUNSCH

Conception Lubricant



Kinderwunsch Conception Lubricant

Ritex Kinderwunsch Conception Lubricant is a medical product for application in the vaginal area to support couples with the desire to have children with natural conception. With its excellent glide properties, it effectively compensates for a lack of vaginal moisture (e.g. as caused by stress, medication, etc.).

Clinical in-vitro studies have shown that Ritex Kinderwunsch Conception Lubricant preserves characteristics of sperm which are important for successful conception, such as motility, vitality, morphology, and integrity of DNA, very well.

For more information and for an overview of our dermatological and clinical studies, visit www.kinderwunsch-lubricant.com.

Technical terms:

Motility – The motility of sperm is the ability of sperm to move by itself. Progressive motility is referred to when the sperm move in a specific direction.

Vitality – For vitality, the number or percentage of living sperm is the factor considered.

Morphology – This is the external appearance of the sperm. Changes in the morphology can, for example, lead to limitation of sperm movement.

Integrity of the DNA – Even if the sperm shows no abnormalities in the previously listed properties, it is possible that the genetic information that the sperm is transporting may be damaged. Damage to the DNA can, for example, lead to the sperm failing to fertilise the egg.

pH value – The pH value indicates whether an environment is acidic, neutral or alkaline. Studies have shown that sperm in a pH range of 7.2 to 8.5 display the best activity. Vaginal pH is generally constant at about 4 and is therefore significantly too acidic for sperm. During fertile days, the vaginal pH value increases to approximately 7, so that it becomes a sperm-friendly environment.

Osmolality – Osmolality, or osmotic pressure, indicates in this context whether fluid is withdrawn from or added to a cell as a result of the environment. For sperm this value is particularly important, as both a too high and a too low osmolality lead to the sperm becoming inactive or even dying off.

Viscosity – The higher the viscosity of a liquid, the thicker it is. Sperm move best in the viscosity of the cervical mucus during fertile days. If the viscosity is higher, the sperm are slowed down and require more energy for movement. If the viscosity is lower, then the sperm begin to “wriggle” which also consumes more energy than normal.

What is special about Ritex Kinderwunsch Conception Lubricant?

Most conventional lubricants are adapted to the vaginal pH value during non-fertile days and therefore are much too acidic for sperm. In addition, the osmolality of many lubricants is very high, so that the activity of sperm is significantly reduced or even completely removed.

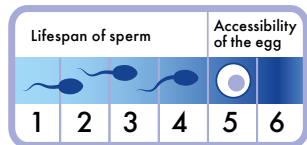
Ritex Kinderwunsch Conception Lubricant has been developed so that the crucial parameters of pH value and osmolality are maintained in naturally given measures. The viscosity of Ritex Kinderwunsch Conception Lubricant is similar to the viscosity of the cervical mucus on fertile days so that the sperm are supported in their forward motion. In addition, the Ritex Kinderwunsch Conception Lubricant is free from preservatives and thus particularly gentle on sperm.

- Clinically tested (in vitro) for sperm friendliness
- Optimised viscosity for sperm motility
- Maintains the natural pH value of ejaculate and cervical mucus
- Maintains organic osmolality
- Free from preservatives
- Specially selected raw materials of the highest quality
- Produced with state-of-the-art technology in Germany
- Regular and strict quality controls
- **Patent pending**

When should Ritex Kinderwunsch Conception Lubricant be used?

Ritex Kinderwunsch Conception Lubricant should be used during a woman's fertile days (approx. 6 days per cycle: 4 days before ovulation, the day of ovulation itself and one day after ovulation). The highest probability for fertilisation is on the day of ovulation. Because sperm can survive for up to 5 days in the female genital tract, unprotected intercourse can, however, lead to conception up to 4 days before the day of ovulation. Following ovulation, the egg can still be reached by the sperm for 24 hours, meaning that conception is also possible during this time period.

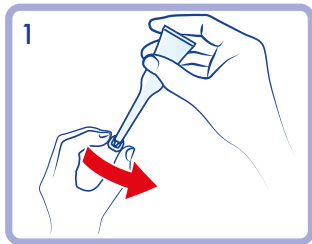
Fertile days



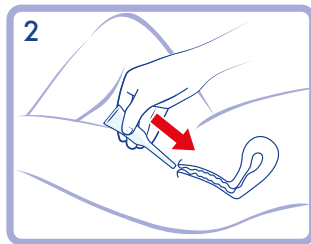
Instructions for use

The lubricant is effective immediately and can be applied immediately before intercourse. Before first use, tear open the perforation of the protective pouch. Remove an applicator and reseal the protective pouch with the zipper carefully.

Please note that the contents of the protective pouch may only be used for up to three months after opening. Before using the applicator, please check the expiry date (see the crimp of the tube). Do not use an applicator if its expiry date has passed.

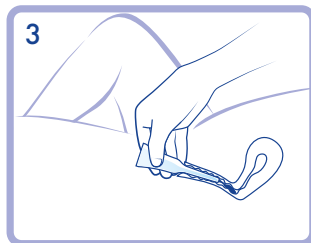


Remove the protective cap from the applicator (1) and discard. Please do not use the applicator if the protective cap is damaged or missing. The faulty applicator must be disposed of and a new one must be used instead.

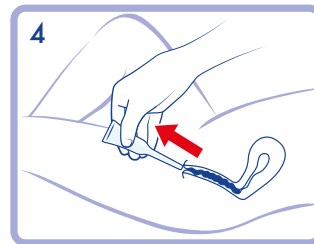


Please use the applicator in a lying position so that the lubricant can be optimally removed and introduced.

Hold the applicator in the middle area of the tube with your thumb and fingers and then introduce the thin end carefully into the vagina (2).



Squeeze the middle of the tube several times in order to remove the lubricant (3).



Then pull the applicator out of the vagina and keep squeezing the tube so that no vaginal secretion is sucked in (4).

Please dispose of the used applicator. The applicators are designed expressly for single use only.

Ritex Kinderwunsch Conception Lubricant can leave stains on textiles which may prove difficult to wash out. Lubricant must not be allowed to come into contact with the eyes, as the lubricating film can cause temporarily cloudy vision. Keep out of the reach of children.

Please also note the following information symbols on the packaging:

- Please note the detailed instructions in this package leaflet.
- For hygienic reasons use each applicator only once.
- Keep applicators away from direct sunlight and heat.
- Store in a dry place.
- Expiry date. Do not use applicators past their expiry date.
- Batch code
- Ritex item number
- Manufacturer

Pack contents:

8 single-use applicators à 4 ml in a resealable zip pouch.

Ingredients: Dimethicone Ph.Eur.

Ritex GmbH
Gustav-Winkler-Straße 50
33699 Bielefeld • Germany
www.kinderwunsch-lubricant.com

Dated: July 2016
R.MAT. NO. 5721530716