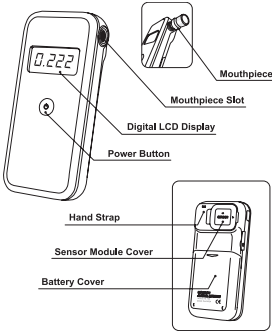
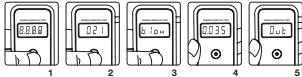


AL7000 Specifications

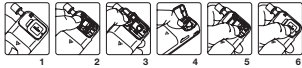


How to Use



- 1 Press the power switch. Press and hold the power switch displays the total accumulated tests.
- 2 Warm up.
- 3 Blow into the mouthpiece for four seconds until the unit beeps twice.
- 4 The result is displayed for 15 seconds.
- 5 Unit turns off automatically.

Sensor Module Replacement



- Ensure power is off.**
- 1 Open the sensor cover.
 - 2 Locate sensor module.
 - 3 Removed PCB.
 - 4 Insert new sensor module into original position.
 - 5 Ensure sensor is correctly fitted.
 - 6 Close sensor cover and test unit.

Warnings

Warning Display

"Flow" indicates the breath sample was not strong enough for measurement. Turn on unit again: blow strongly and steadily during sampling.

If you make over 300 test the unit will display **"CAL"** for 15 seconds while warming up for the test. **"CAL"** indicates it is time for sensor replacement.

"bAt" indicates the battery power is low. Replace batteries.

Specifications

Range	0.000 to 2.000 mg/l
Accuracy	+/- 0.02% to 0.10% BAC
Sensor	Oxide semiconductor
Power	Two 1.5v AA alkaline batteries
Testing capacity Approx	100 - 200 with new batteries
Operating temperature	10-40°C
Warm-up	Less than one minute
Display	3-digit LCD
Size (mm)	105 H x 50 W x 18 D
Weight	98g
Sensor module	Sensor module should be replaced after approximately 300 tests or if damaged by improper testing of handling.

Contents

Breathalyzer, mouthpieces (5), AA alkaline batteries (2), pouch, hand strap, 12V DC in-car charger and manual.



Warranty

Recalibration & Service

AlcoDigital
AL7000
BREATHALYZER



DRINK DRIVING LIMITS as displayed by this breathalyzer

England & Wales 0.35 mg/l
Scotland, Ireland, France 0.22 mg/l

These are the legal maximum. ANY alcohol in the body will impair judgement; the only safe limit is ZERO. DO NOT DRINK AND DRIVE!