

## MOONLIGHT BABY OVULATION SALIVA MICROSCOPE

### Introduction

This is a personal ovulation microscope that allows you to predict ovulation with 98% accuracy. When a woman is about to ovulate, her saliva begins to form a distinct crystal, fern-like pattern due to an increase in hormone levels – which can be seen through the 50x magnification lens. This “ferning” pattern begins to appear around 3 to 5 days prior to ovulation.

### Inserting the Batteries

Remove the protective pink casing (both parts) and unscrew the white plastic base. Insert both batteries (included) with the positive side (the side with the writing on) face down into the unit. Then replace the white plastic base and tighten. Please ensure you do not fasten the base completely as this will turn the light on and will use up the batteries. Only tighten the base completely when viewing a sample to preserve the life of the batteries.

### Using the Ovulation Microscope

Remove the protective pink casing (both parts) and PULL (do NOT twist) the lens from the tube. Add a drop of saliva to the lens (at the silver end) and allow the saliva sample to dry for at least five minutes. Replace the lens into the body of the microscope and turn the LED light on by twisting the battery compartment at the base until it closes.



Version 1.0 17/12/13

## MOONLIGHT BABY OVULATION SALIVA MICROSCOPE

### Introduction

This is a personal ovulation microscope that allows you to predict ovulation with 98% accuracy. When a woman is about to ovulate, her saliva begins to form a distinct crystal, fern-like pattern due to an increase in hormone levels – which can be seen through the 50x magnification lens. This “ferning” pattern begins to appear around 3 to 5 days prior to ovulation.

### Inserting the Batteries

Remove the protective pink casing (both parts) and unscrew the white plastic base. Insert both batteries (included) with the positive side (the side with the writing on) face down into the unit. Then replace the white plastic base and tighten. Please ensure you do not fasten the base completely as this will turn the light on and will use up the batteries. Only tighten the base completely when viewing a sample to preserve the life of the batteries.

### Using the Ovulation Microscope

Remove the protective pink casing (both parts) and PULL (do NOT twist) the lens from the tube. Add a drop of saliva to the lens (at the silver end) and allow the saliva sample to dry for at least five minutes. Replace the lens into the body of the microscope and turn the LED light on by twisting the battery compartment at the base until it closes.



Version 1.0 17/12/13

## MOONLIGHT BABY OVULATION SALIVA MICROSCOPE

### Introduction

This is a personal ovulation microscope that allows you to predict ovulation with 98% accuracy. When a woman is about to ovulate, her saliva begins to form a distinct crystal, fern-like pattern due to an increase in hormone levels – which can be seen through the 50x magnification lens. This “ferning” pattern begins to appear around 3 to 5 days prior to ovulation.

### Inserting the Batteries

Remove the protective pink casing (both parts) and unscrew the white plastic base. Insert both batteries (included) with the positive side (the side with the writing on) face down into the unit. Then replace the white plastic base and tighten. Please ensure you do not fasten the base completely as this will turn the light on and will use up the batteries. Only tighten the base completely when viewing a sample to preserve the life of the batteries.

### Using the Ovulation Microscope

Remove the protective pink casing (both parts) and PULL (do NOT twist) the lens from the tube. Add a drop of saliva to the lens (at the silver end) and allow the saliva sample to dry for at least five minutes. Replace the lens into the body of the microscope and turn the LED light on by twisting the battery compartment at the base until it closes.



Version 1.0 17/12/13

## MOONLIGHT BABY OVULATION SALIVA MICROSCOPE

### Introduction

This is a personal ovulation microscope that allows you to predict ovulation with 98% accuracy. When a woman is about to ovulate, her saliva begins to form a distinct crystal, fern-like pattern due to an increase in hormone levels – which can be seen through the 50x magnification lens. This “ferning” pattern begins to appear around 3 to 5 days prior to ovulation.

### Inserting the Batteries

Remove the protective pink casing (both parts) and unscrew the white plastic base. Insert both batteries (included) with the positive side (the side with the writing on) face down into the unit. Then replace the white plastic base and tighten. Please ensure you do not fasten the base completely as this will turn the light on and will use up the batteries. Only tighten the base completely when viewing a sample to preserve the life of the batteries.

### Using the Ovulation Microscope

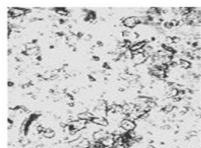
Remove the protective pink casing (both parts) and PULL (do NOT twist) the lens from the tube. Add a drop of saliva to the lens (at the silver end) and allow the saliva sample to dry for at least five minutes. Replace the lens into the body of the microscope and turn the LED light on by twisting the battery compartment at the base until it closes.



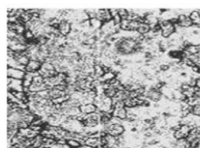
Version 1.0 17/12/13

Then focus by turning the eyepiece of the microscope (only twist the black part with the milled edge). If you are ovulating - or about to ovulate - a ferning, crystal-like pattern can be viewed.

NOTE: Test first thing in the morning using a sublingual saliva sample (fresh from below the tongue). Do not test after eating, drinking, smoking or brushing teeth.



**Non-fertile**  
Only dots and some lines appear



**Transitional**  
Some fern patterns start to appear



**Fertile**  
A lot of ferning patterns appear

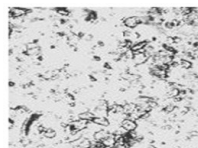
#### After testing

- Make sure you loosen the battery compartment a little so that the light switches off – this will preserve the life of the batteries.
- Clean the lens with a clean damp cloth.
- Replace the pink casing to protect the microscope.

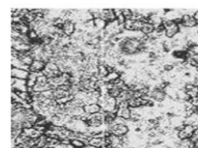
Distributed in the UK by: Home Health UK Ltd, Unit 11, Peerglow Industrial Estate, Olds Approach, Watford, Herts WD18 9SR  
Tel: 01923 711511, Web: <http://www.homehealth-uk.com>

Then focus by turning the eyepiece of the microscope (only twist the black part with the milled edge). If you are ovulating - or about to ovulate - a ferning, crystal-like pattern can be viewed.

NOTE: Test first thing in the morning using a sublingual saliva sample (fresh from below the tongue). Do not test after eating, drinking, smoking or brushing teeth.



**Non-fertile**  
Only dots and some lines appear



**Transitional**  
Some fern patterns start to appear



**Fertile**  
A lot of ferning patterns appear

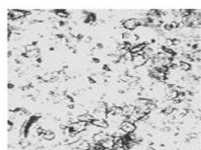
#### After testing

- Make sure you loosen the battery compartment a little so that the light switches off – this will preserve the life of the batteries.
- Clean the lens with a clean damp cloth.
- Replace the pink casing to protect the microscope.

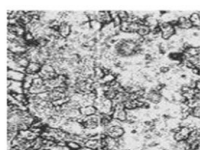
Distributed in the UK by: Home Health UK Ltd, Unit 11, Peerglow Industrial Estate, Olds Approach, Watford, Herts WD18 9SR  
Tel: 01923 711511, Web: <http://www.homehealth-uk.com>

Then focus by turning the eyepiece of the microscope (only twist the black part with the milled edge). If you are ovulating - or about to ovulate - a ferning, crystal-like pattern can be viewed.

NOTE: Test first thing in the morning using a sublingual saliva sample (fresh from below the tongue). Do not test after eating, drinking, smoking or brushing teeth.



**Non-fertile**  
Only dots and some lines appear



**Transitional**  
Some fern patterns start to appear



**Fertile**  
A lot of ferning patterns appear

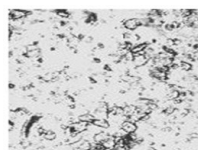
#### After testing

- Make sure you loosen the battery compartment a little so that the light switches off – this will preserve the life of the batteries.
- Clean the lens with a clean damp cloth.
- Replace the pink casing to protect the microscope.

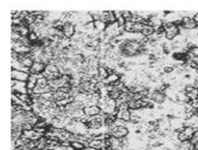
Distributed in the UK by: Home Health UK Ltd, Unit 11, Peerglow Industrial Estate, Olds Approach, Watford, Herts WD18 9SR  
Tel: 01923 711511, Web: <http://www.homehealth-uk.com>

Then focus by turning the eyepiece of the microscope (only twist the black part with the milled edge). If you are ovulating - or about to ovulate - a ferning, crystal-like pattern can be viewed.

NOTE: Test first thing in the morning using a sublingual saliva sample (fresh from below the tongue). Do not test after eating, drinking, smoking or brushing teeth.



**Non-fertile**  
Only dots and some lines appear



**Transitional**  
Some fern patterns start to appear



**Fertile**  
A lot of ferning patterns appear

#### After testing

- Make sure you loosen the battery compartment a little so that the light switches off – this will preserve the life of the batteries.
- Clean the lens with a clean damp cloth.
- Replace the pink casing to protect the microscope.

Distributed in the UK by: Home Health UK Ltd, Unit 11, Peerglow Industrial Estate, Olds Approach, Watford, Herts WD18 9SR  
Tel: 01923 711511, Web: <http://www.homehealth-uk.com>